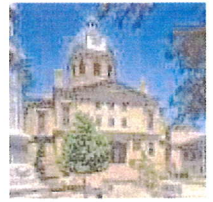


LARRY LINDBERG

Tuscarawas County Auditor | Tuscarawas County, Ohio



SUMMARY

Table with property details: Deeded Name (FOSTER EARL ROTH), Owner (ROTH FOSTER EARL), Taxpayer (ROTH FOSTER EARL), Tax District (66-WARWICK TWP-TUSCARAWAS CORP), Land Use (510-SINGLE FAMILY DWELLING), etc.

VALUE

Table with columns: District (66-WARWICK TWP-TUSCARAWAS CORP), Land Use (510-SINGLE FAMILY DWELLING), Appraised, Assessed. Includes rows for Land, Improvement, Total, CAUV, Homestead, OOC, Taxable.

CURRENT CHARGES

Table with columns: Full Rate (63.900000), Effective Rate (43.513619), Qualifying Rate (38.014618). Includes sub-table with columns: Prior, First, Second, Total for Tax, Special, Total, Paid, Due.

FUTURE CHARGES

Table with columns: Type (Special Assessments), Description (C980000000 MWCD), Amount (6.00).

TRANSFER HISTORY

Table with columns: Date, Conveyance, Deed Type, Sales Amount, Valid, # of Properties. Shows transfers from 02/24/2023 and 07/08/2021.

LAND

Table with columns: Type (FR-FRONT LOT), Dimensions (58.0000 X 132.0000), Description (Effective - Frontage / Depth), Value (14,660).

DWELLING

Table with columns: Card 1, Style (01-SINGLE FAMILY), Stories (2.00), Rooms (6), Bed Rooms (3), Heating (0), Cooling (1), etc.

OTHER IMPROVEMENT

Table with columns: Card Type (1 SHED), Year Built (1996), Condition (F-FAIR), Dimensions (10 X 20), Description (Length x Width (Optional)), Value (880).

UTILITIES

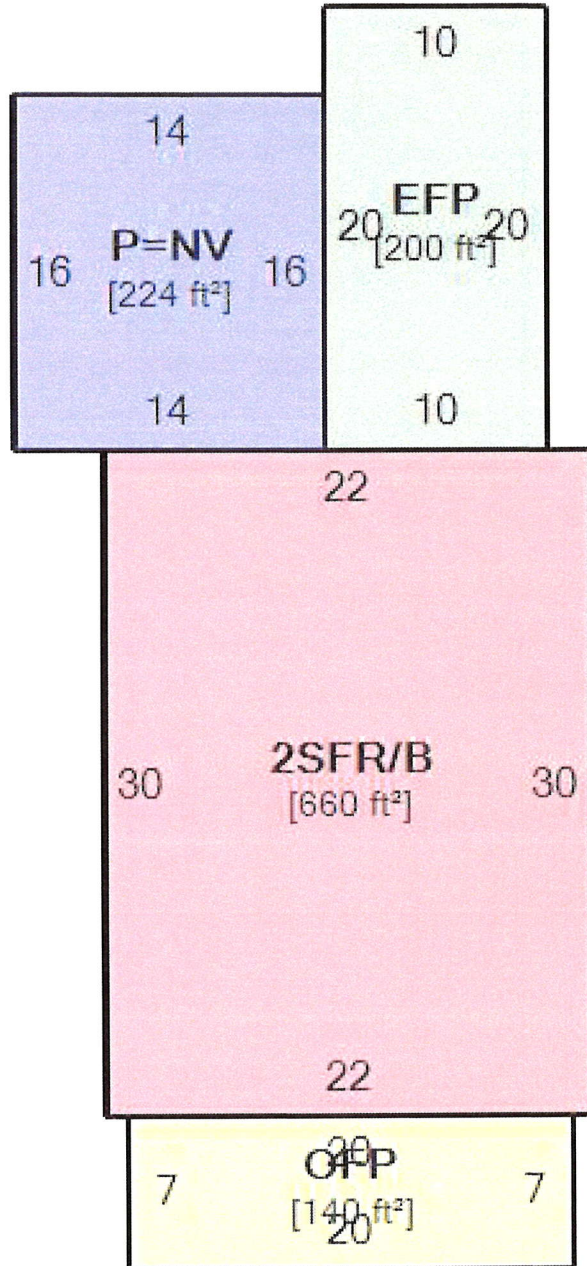
Table with columns: Water (N Sewer), Electric (N Electric), Gas (N Gas), Well (N Well), Septic (N Septic).

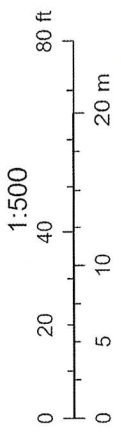
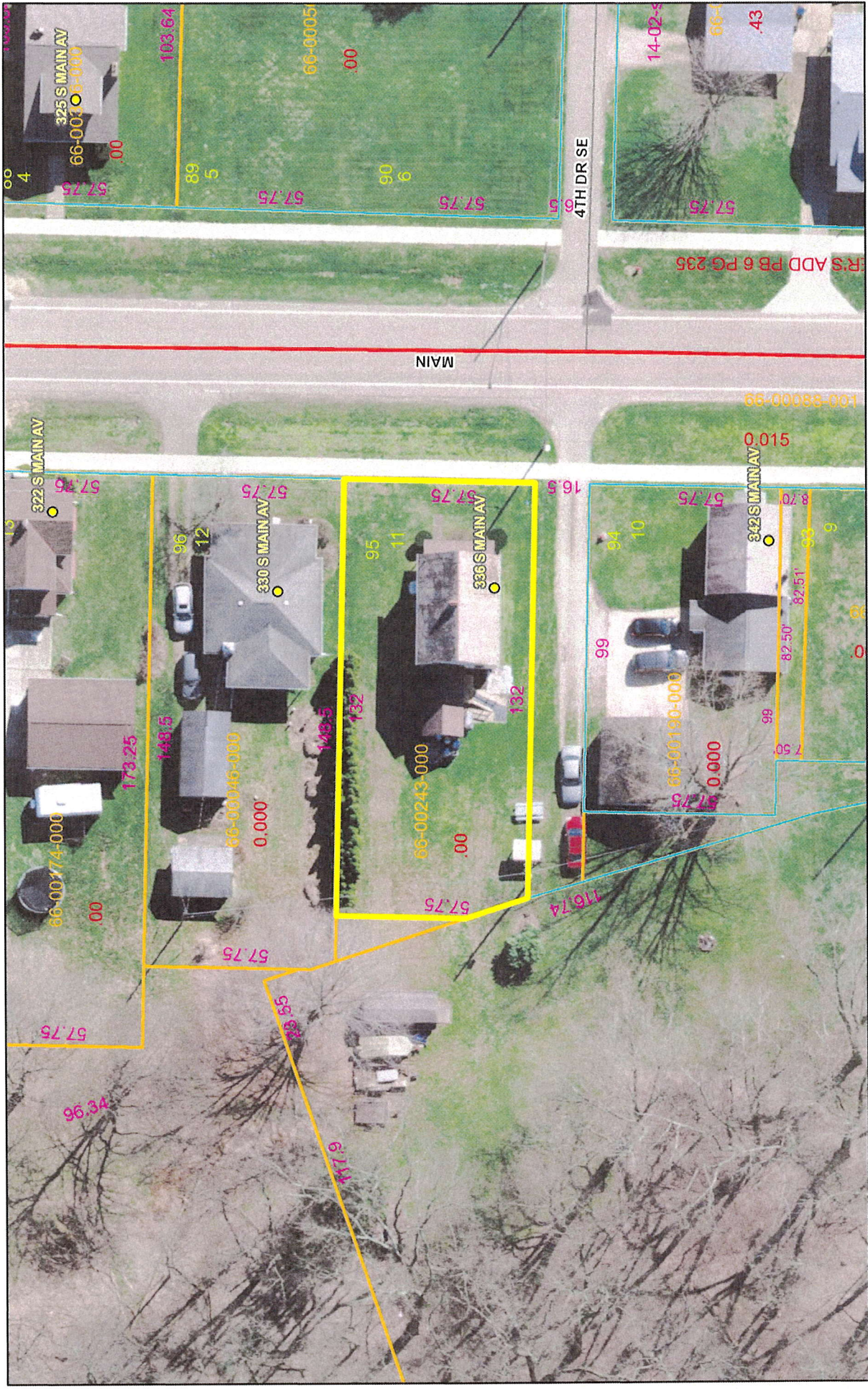
SKETCH

Card 1

ID	Description	Size	Floor	Floor Area (ft ²)	Living Area (ft ²)
A	2SFR/B (2 STORY FRAME / BASEMENT)	660	First Floor	660	660
B	OFP (OPEN FRAME PORCH)	140	Full Upper Floor	660	660
C	EFP (ENCLOSED FRAME PORCH)	200	Basement	660	0
D	P=Nv (PATIO (NO VALUE))	224	Total	1,980	1,320
2	SHED	200			

2





Tuscarawas County, OH

4/14/2023